

STONEHAVEN, P.U.D.

0709-001

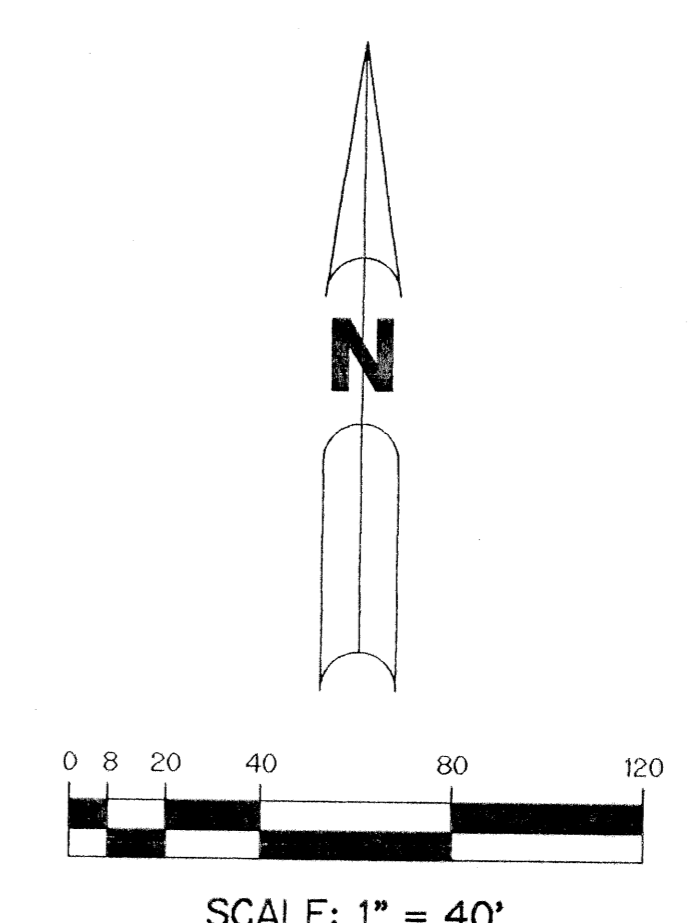
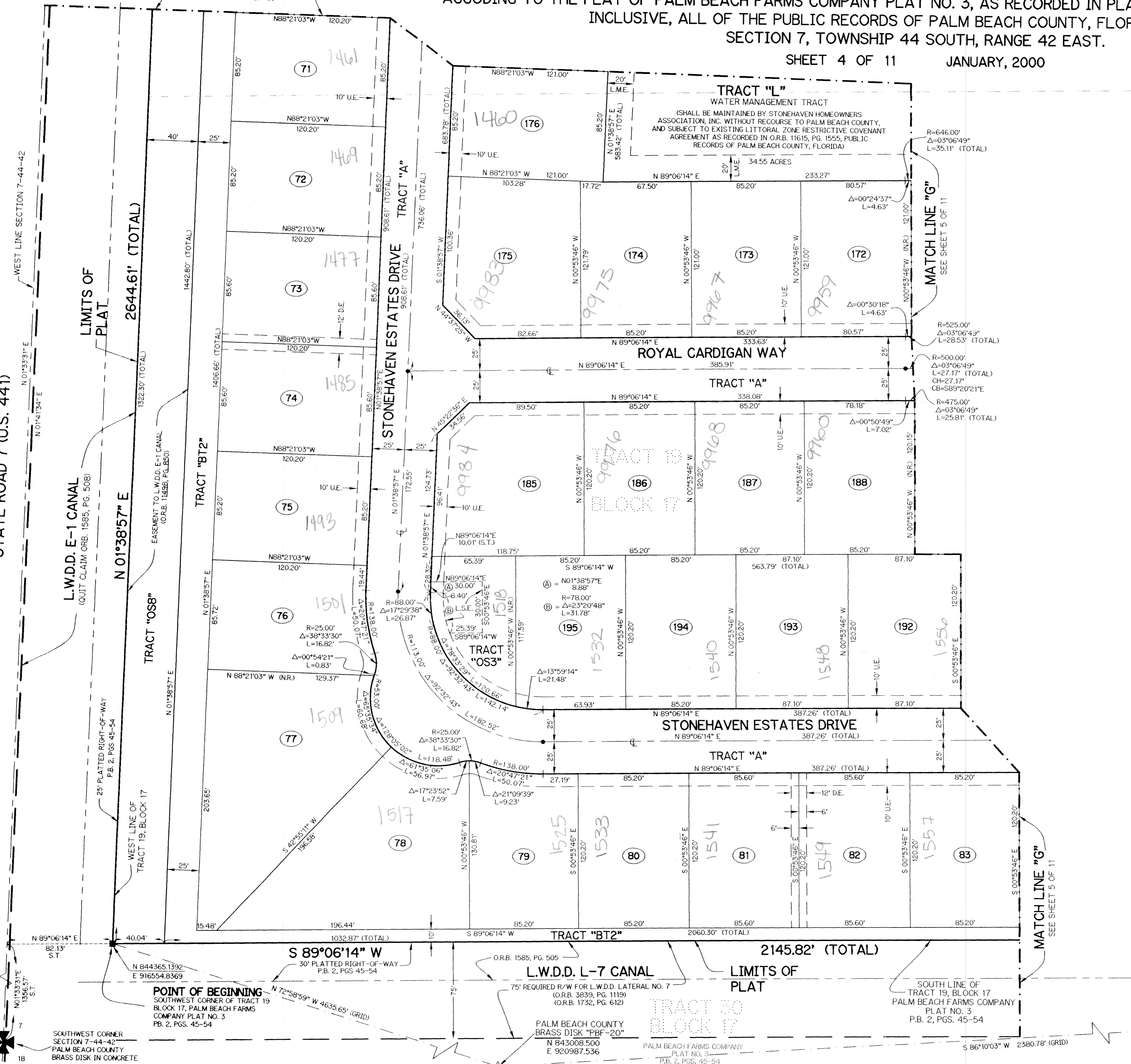
4

BEING A REPLAT OF A PORTION OF TRACTS 4, 5, 6, AND ALL OF TRACTS 7, 9, 16, 17, 18, 19, 20 AND 21, BLOCK 17, TOGETHER WITH THE PLATTED RIGHT-OF-WAY ADJACENT TO TRACTS 5, 4, 7, 8, 9, 16, 17, 18, 20 AND 21, BLOCK 17, ACCORDING TO THE PLAT OF PALM BEACH FARMS COMPANY PLAT NO. 3, AS RECORDED IN PLAT BOOK 2, PAGES 45 THROUGH 54, INCLUSIVE, ALL OF THE PUBLIC RECORDS OF PALM BEACH COUNTY, FLORIDA. LYING IN SECTION 7, TOWNSHIP 44 SOUTH, RANGE 42 EAST.

SHEET 4 OF 11 JANUARY, 2000

STATE ROAD 7 (U.S. 441)

WEST LINE SECTION 7-44-42

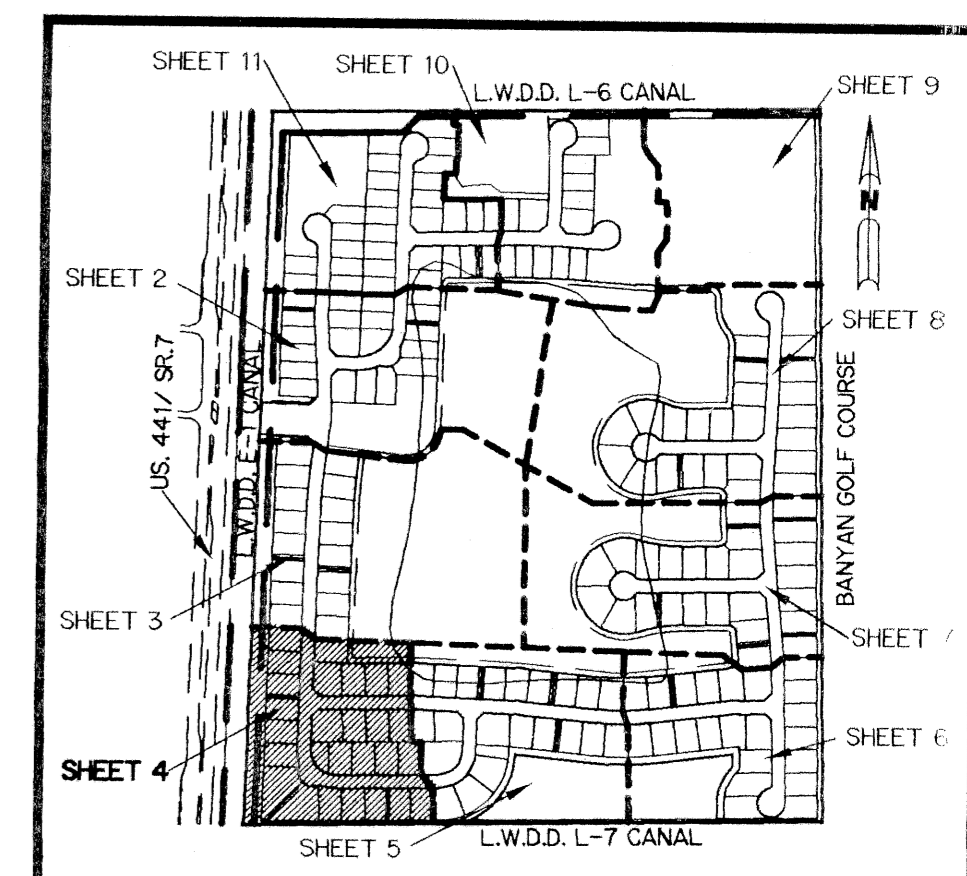


- LEGEND:**
- - SET PERMANENT REFERENCE MONUMENT, LB-6674
 - - PERMANENT CONTROL POINT, LB-6674
 - △ - DELTA ANGLE
 - B.E. - BUFFER EASEMENT
 - CB - CHORD BEARING
 - CH - CHORD
 - CL - CENTERLINE
 - D.B. - DEED BOOK
 - D.E. - DRAINAGE EASEMENT
 - L - ARC LENGTH
 - A.E. - ACCESS EASEMENT
 - L.A.E. - LIMITED ACCESS EASEMENT
 - L.M.A.E. - LAKE MAINTENANCE ACCESS EASEMENT
 - L.M.E. - LAKE MAINTENANCE EASEMENT
 - L.W.D.D. - LAKE WORTH DRAINAGE DISTRICT
 - N.R. - NOT RADIAL
 - N.T.S. - NOT TO SCALE
 - O.E. - OVERHANG EASEMENT
 - O.R.B. - OFFICIAL RECORD BOOK
 - P.B. - PLAT BOOK
 - PGS. - PAGES
 - P.S.M. - PROFESSIONAL SURVEYOR AND MAPPER
 - R - RADIUS
 - RAD. - RADIAL
 - R/W - RIGHT-OF-WAY
 - S.D.E. - SWALE DRAINAGE EASEMENT
 - S.T. - SURVEY TIE
 - U.E. - UTILITY EASEMENT
 - L.S.E. - LIFT STATION EASEMENT
 - W.P.B. - WETLAND PRESERVE BUFFER
 - N 737648.0171 E 906258.2326 - DENOTES STATE PLANE COORDINATES

NOTE:
 COORDINATES SHOWN ARE GRID COORDINATES
 DATUM = NAD 83 (1990 ADJUSTMENT)
 ZONE = FLORIDA EAST ZONE
 LINEAR UNIT = U.S. SURVEY FEET
 COORDINATE SYSTEM = 1983 STATE PLANE TRANSVERSE MERCATOR PROJECTION
 ALL DISTANCES ARE GROUND
 SCALE FACTOR = 1.0000193
 N 01°38'57" E (PLAT BEARING)
 N 01°35'48" E (GRID BEARING)
 (PLAT TO GRID 00°03'09" COUNTERCLOCKWISE)

THIS INSTRUMENT PREPARED BY
 WILBUR F. DIVINE, P.S.M. 4190, STATE OF FLORIDA
 LAWSON, NOBLE AND WEBB, INC.
 ENGINEERS PLANNERS SURVEYORS
 420 COLUMBIA DRIVE
 WEST PALM BEACH, FLORIDA 33409
 LB-6674

KEY MAP
N.T.S.



Subdivision Stonehaven PUD
 PAGE 4
 FLOOD MAP # 100A
 FLOOD ZONE
 ZONING DDO
 QUAD # 47
 ZIP CODE 33411
 SHEET # 101
 PUB NAME

POINT OF BEGINNING
 SOUTHWEST CORNER OF TRACT 19
 BLOCK 17, PALM BEACH FARMS
 COMPANY PLAT NO. 3
 P.B. 2, PGS. 45-54
 N 844365.1392
 E 916554.8369

75' REQUIRED R/W FOR L.W.D.D. LATERAL NO. 7
 (O.R.B. 3839, PG. 1119)
 (O.R.B. 1732, PG. 612)
 PALM BEACH COUNTY
 BRASS DISK "PBF-20"
 N 843008.500
 E 920987.536
 PALM BEACH COUNTY
 PLAT NO. 3
 P.B. 2, PGS. 46-54

PALM BEACH COUNTY
 BRASS DISK "PBF-19"
 N 843167.637
 E 923362.995